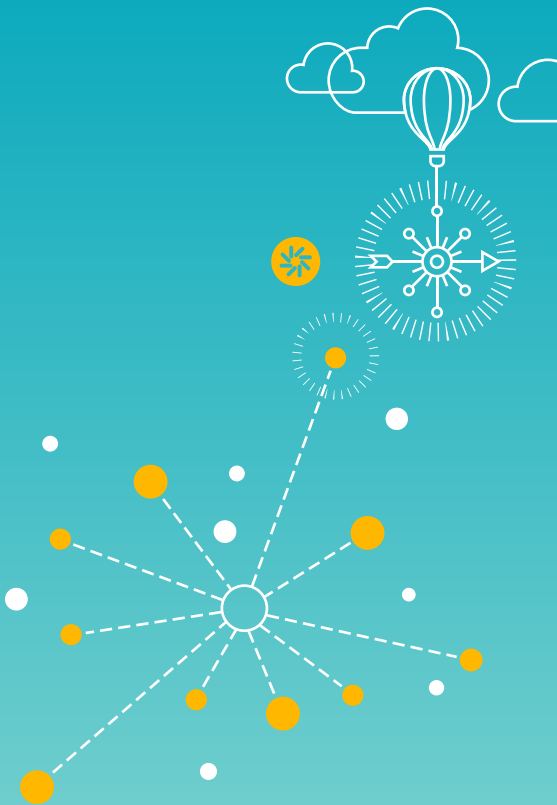


Chef



Chef

As the Corporate Chef, my role combines food and menu research, hands-on cooking and product development for employees and guests who dine in one of our seven onsite restaurants. I also plan and price menu items, order supplies and keep records.

Wages & Employment Trends




Median wages (2014)

\$10.81 hourly, \$22,490 annual

Projected growth (2012-2022)

 **Faster than average (15% to 21%)**

Education Level Required

38		High school diploma or equivalent
33		Less than high school diploma
11		Some college, no degree